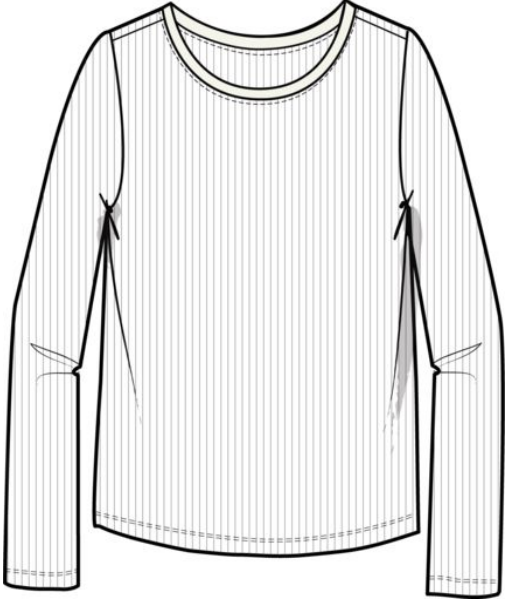


Image



Tech Pack	D14882 Stretch To Fit JPN LS RIB TEE 000749850 Adopted
Season	Fall 2024
Brand/Division	GAP - GIRLS
Department	GIRLS KNIT /SWEATERS
Collection	OUTLET GIRLS KNIT TOPS/TEES


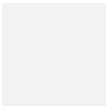

Design BOM	GO Stretch To Fit JPN LS RIB TEE 000749850 543160
BOM Number	000749850
Category	KNITS
Sub-Category	KNIT TOPS
Legacy Style Numbers	543160
Status	Adopted

Flow	September
Vendor	SHINWON CORPORATION
Created	1/29/2024, 5:32 AM
Modified	2/14/2024, 4:36 AM

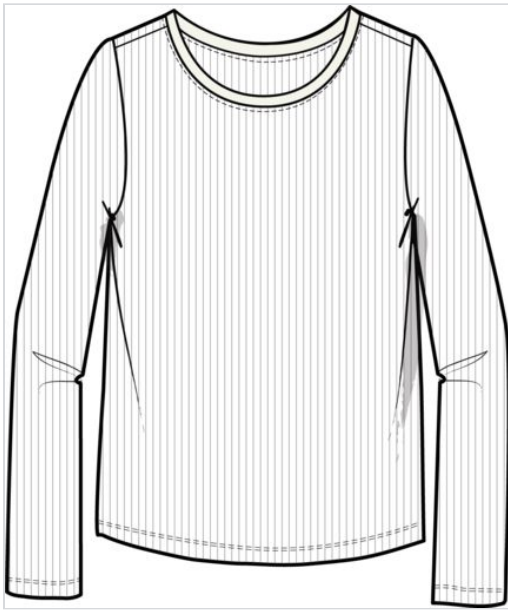
Disclaimer Text

This Gap Inc. style must be produced and tested in compliance with all Product Safety Standards and Procedures as outlined in the Product Safety & Regulations Manual (Apparel & Apparel Accessories), PSR Protocols, SOPs, and current Technical Bulletins. This information can be found on the Gap Source Library on The Thread (Category Standards & Testing). Each vendor is responsible for ensuring that all products made for Gap Inc. are in compliance with all applicable laws, rules, guidelines, and regulations.

Components

Component	Type	Status	Created	Modified	BOMColorMatrix				
					Image	CC Name	CC Status	BOM CC Number	Final Sustainable Product Claims
GO Stretch To Fit JPN LS RIB TEE 000749850 543160	Design BOM	Adopted	2/14/2024, 4:36 A	2/14/2024, 4:36		BLACK 291	Adopted	000002932104	Washwell
						WHITE 000	Adopted	000002932103	Washwell
						Bainbridge Blue	Adopted	000002956264	

Displaying 1 result



Design Number	D14882	Flow	September
Description	JPN LS RIB TEE	Category	KNITS
BOM Number	000749850	Sub-Category	KNIT TOPS
Design BOM	GO Stretch To Fit JPN LS RIB TEE 000749850 543160	Item Type	PULLOVER
Status	Adopted	Design Type	Top
BOM Version	GO	Design Sub-Type	Top
BOM Primary RD Number	46846	Fit Camp	Stretch To Fit
Supplier [Allocate]	46846:Shenzhen Smart Fabric Textile Technology Co. Ltd	Element	
Material Supplier Status	Material Approved	Vendor	SHINWON CORPORATION
Primary RD Comment	(USE KB MOU)	GIS Office	Vietnam
Carryover		Legacy Style Numbers	543160
Season	Fall 2024	Booking Track	
Brand/Division	GAP - GIRLS	Good/Better/Best	
Department	GIRLS KNIT /SWEATERS	Priority	
Collection	OUTLET GIRLS KNIT TOPS/TEES	Hard Tag Indicator	
Design Concept		Hang/Fold Instructions	
		BOM Comments New	
		Revision Modified	2/14/2024, 4:36 AM

Costing Information

Last Send to Costing Date	1/4/2024, 8:47 AM	Send to Costing Status	pass
Last Send to Costing Status	Quote HQ1633071 is successfully posted to TradeStone.	Send to Costing Validation	
		Send to Costing	

BOM Details


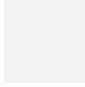


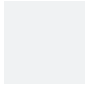




Product	Material Name	Supplier Article Number	Gauge/Ends	Stitch	Common Size	Common Qty	Usage	Image	Primary RD	Quality Details	Supplier [Allocate]	UOM	Only for Product Colors	BLACK 291 - 000002932104	WHITE 000 - 000002932103	Bainbridge Blue - 000002956264	Comment
---------	---------------	-------------------------	------------	--------	-------------	------------	-------	-------	------------	-----------------	---------------------	-----	-------------------------	--------------------------	--------------------------	--------------------------------	---------

Fabric (1)

Displaying 5 groups and 8 results

Centric 8 Production (7.4)	D14882-Stretch To Fit JPN LS RIB TEE	GO Stretch To Fit JPN LS RIB TEE 000749850 543160	IN WORK-Sample 2/14/2024, 4:37 AM
---------------------------------------	---	--	--




BOM Details

Product	Material Name	Supplier Article Number	Gauge/Ends	Stitch	Common Size	Common Qty	Usage	Image	Primary RD	Quality Details	Supplier [Allocate]	UOM	Only for Product Colors	BLACK 291 - 000002932104	WHITE 000 - 000002932103	Bainbridge Blue - 000002956264	Comment
46846	30'S COTTON 2X2 Piece Dye - Solid	UA322A0100				0	BODY		✓	100% Cotton Better Cotton (BCI) / 19G / C30s NE / 42.0 in / 200.0 g/m2 BW / 230.0 g/m2 AW / Piece Dye - Solid	46846:Shenzhen Smart Fabric Textile Technology Co. Ltd			Black 291 (True Black) 291 	WHITE 000 060674 	Bainbridge Blue 117 	(USE KB MOU)
Trim (1)																	
183757	Spun Polyester_Gap	Preferred - A&E or Coats; Tier 2 - Youm Kwang (Shell RD: 183427)			27	0	CONSTRUCTION THREAD AND EXTERIOR TOPSTITCHING				183757:Platform			Black 291 (True Black) 291 	WHITE 000 060674 	Bainbridge Blue 117 	
Wash (1)																	
1008721	NORMAL GARMENT WASH					0								ECO SPRAY WASH	ECO SPRAY WASH	ECO SPRAY WASH	
Graphic (1)																	
GRAPHIC	GRAPHIC					0	SEE ART PAGE							OS24W216 BRANNON BEAR LC 	OS24W216 BRANNON BEAR LC 	OS24W216 BRANNON BEAR LC 	OS24W216 - ALL CCS BEAR EMB IS CONTRAST. BLACK GROUND CC = COMBO B WHITE. WHITE GROUND CC= COMBO E BEDROCK. BAINBRIDGE BLUE = COMBO B WHITE

Packaging and Labels (4)

Displaying 1 - 4 of 8 results

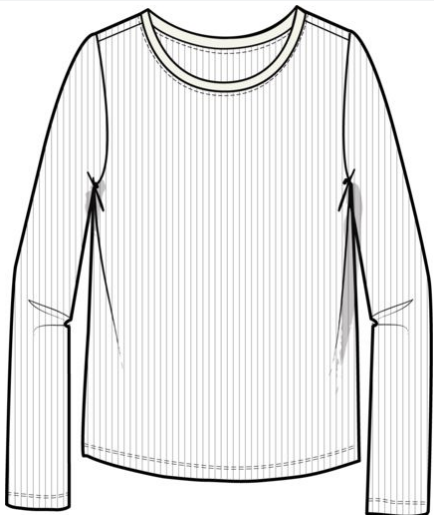
BOM Details

Product	Material Name	Supplier Article Number	Gauge/Ends	Stitch	Common Size	Common Qty	Usage	Image	Primary RD	Quality Details	Supplier [Allocate]	UOM	Only for Product Colors	BLACK 291 - 000002932104	WHITE 000 - 000002932103	Bainbridge Blue - 000002956264	Comment
229032	GAPKIDS TOPS AND OUTERWEAR MAIN LABEL - LOOP plus Size/COO label - GKLBL-229032-G(GLOBAL) GKLBL-229032-C(CANADA) GKLBL-229032-E(EUROPE) Other Label	APPROVED SUPPLIERS: AVERY DENNISON, RPAC, SML				0	INSERT @ CB NECK			Other Label //	229032:Nominated						
188658	Gap_Universal_Normal Wash_C&C Label (Global) - 30mm Slit edge single face satin tape Care/Content Label	AVERY DENNISON, SML, RPAC				0	2" ABOVE BOTTOM HEM AT WEARER'S LEFT			Care/Content Label //	188658:Nominated						
282208	GAP KIDS TOPS & BOTTOMS SIZE STRIP STICKER (EVERYDAY & DENIM) - LONG SLEEVE - GKSTK-282208-G(GLOBAL) GKSTK-282208-C(CANADA) GKSTK-282208-E(EUROPE) Other Packaging	AVERY DENNISON, RPAC, SML, SAMWON				0				Other Packaging //	282208:Nominated						
146541	Printed GGO Global Traceability Label Traceability Label/Joker Tag	VENDOR SOURCED				0				Traceability Label/Joker Tag / Polyester / Straight Cut & Fused	146541:Nominated						

Displaying 5 - 8 of 8 results

Centric 8 Production (7.4) **D14882-Stretch To Fit JPN LS RIB TEE** **D14882 MC GO: FA24: SHINWON: JPN 2x2 100cttn: L/S Version of D8877: 17-BL 11.5-Chs (-1/4): 11-Sh. 2-01-24-Re-run body and approved based on FA23 BOM 702308 done by Shinwon Final** **READY-Sample 2/14/2024, 4:37 AM**

Image



Season	Fall 2024
Brand/Division	GAP - GIRLS
Collection	OUTLET GIRLS KNIT TOPS/TEES
Department	GIRLS KNIT /SWEATERS
Measurement Chart	D14882 MC GO: FA24: SHINWON: JPN 2x2 100cttn: L/S Version of D8877: 17-BL 11.5-Chs (-1/4): 11-Sh. 2-01-24-Re-run body and approved based on FA23 BOM 702308 done by Shinwon Final

Milestone	Final
Size Range	ALPHA
Selected Sizes	XS-XXL
Base Size	M
Grade Rule	Gap Girl Knit Sweater Top Alpha (Half) 2022
Size Chart Tier	KB Alpha L30
Status	Non-fit Final
Sample Request Sizes	M
Tolerance Changed	✓

Tolerance Message	
MC Comments	Ref pattern 2x2 GGK117F21-577276. Chest is 11.75-14 due to 100cttn rib
Created	2/1/2024, 7:21 PM
Created By	Svetlana Nevskaya
Modified	2/1/2024, 7:27 PM
Modified By	Svetlana Nevskaya

Centric 8 **D14882-Stretch** **D14882 MC GO: FA24: SHINWON: JPN 2x2 100cttn: L/S Version of D8877: 17-BL 11.5-** **READY-Sample 2/14/2024, 4:37 AM**
Production **To Fit JPN LS** **Chs (-1/4): 11-Sh. 2-01-24-Re-run body and approved based on FA23 BOM 702308**
(7.4) **RIB TEE** **done by Shinwon Final**

Measurement Chart

POM Name	Description	POM Variation	QC	Tol Fraction (-)	Tol Fraction (+)	Tolerance Message	Grading Override Message	XS	S	M	L	XL	XXL
J9.9	CF Body Length from the Imaginary Line at the HPS to the Bottom Edge	(G) Top	✓	-1/2	1/2			-1 1/2	-1 1/2	17	1	1	1
↳ G-17 AS 8877													
B25.13	Neck Width	(G) Seam to Seam >7"	✓	-1/4	1/4			-3/8	-1/4	6 1/2	1/4	1/4	1/4
B26.2	Front Neck Drop	Imaginary Line to Seam		-1/4	1/4			-1/4	-1/4	3 1/4	1/8	1/8	1/8
B29.6	Back Neck Drop	Imaginary Line to Seam		-1/8	1/8			-1/4	0	1 1/4	0	1/8	0
Z18.3	Trim Height	Neck at Center Back		-1/8	1/8			0	0	5/8	0	0	0
C1.15	Shoulder Width	(G) Front - Seam to Seam </=14"	✓	-1/2	1/2			-5/8	-1/2	11	1/2	1/2	1/2
↳ 2X2 G XS TIGHT FIT D6984													
C3	Shoulder Slope			-1/8	1/8			-1/8	0	5/8	0	1/8	0
C7	Shoulder Seam Forward at Neckline			-1/8	1/8			0	0	3/8	0	0	0
D13.3	Armhole Straight - 2 Point Measurement	(G) </=6.5"	✓	-1/4	1/4			-1/2	-1/2	6 1/8	1/4	1/4	1/4
F7.2	High Chest at 1/2 of Armhole	(G)		-1/4	1/4			-5/8	-1/2	9 1/4	1/2	1/2	1/2
↳ 2X2 G XS TIGHT FIT D6984													
F20.2	High Back at 1/2 of Armhole	(G)		-1/4	1/4			-5/8	-1/2	9 1/2	1/2	1/2	1/2
F10.11	Chest 1" Below Armhole	(G) </=16"	✓	-1/2	1/2			-1	-3/4	11 1/2	3/4	3/4	3/4
↳ 2x2 D6984													

Centric 8 **D14882-Stretch** **D14882 MC GO: FA24: SHINWON: JPN 2x2 100cttn: L/S Version of D8877: 17-BL 11.5-** **READY-Sample 2/14/2024, 4:37 AM**
Production **To Fit JPN LS** **Chs (-1/4): 11-Sh. 2-01-24-Re-run body and approved based on FA23 BOM 702308**
(7.4) **RIB TEE** **done by Shinwon Final**

Measurement Chart

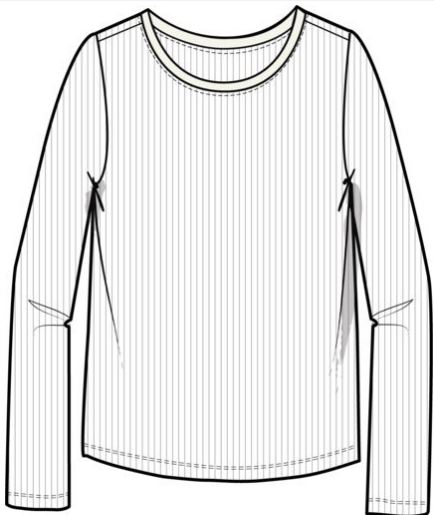
POM Name	Description	POM Variation	QC	Tol Fraction (-)	Tol Fraction (+)	Tolerance Message	Grading Override Message	XS	S	M	L	XL	XXL
i5.19	Bottom Opening - Relaxed	(G) </=16"	✓	-1/2	1/2			-1	-3/4	11 1/2	3/4	3/4	3/4
T10.2	Hem Height	Bottom		-1/8	1/8			0	0	5/8	0	0	0
E1.0	Sleeve Length from Center Back		✓	-1/2	1/2			-2 1/2	-2 1/2	26	1 1/4	1 1/4	1 1/4
E7	Sleeve Cap Height			-1/8	1/8			-3/8	-3/8	4 5/8	1/8	1/8	1/8
↳ PATTERN REFERENCE ONLY G													
E9.2	Bicep 1" below Armhole	<6		-1/4	1/4			-3/8	-3/8	4 1/4	1/4	1/4	1/4
E13.3	Sleeve Opening Relaxed	Long	✓	-1/4	1/4			0	-1/4	3	1/4	0	1/4
T10.7	Hem Height	(G) Sleeve <1"		-1/8	1/8			0	0	5/8	0	0	0
B34	Minimum Neck Stretch		✓	-0.0	1/8			-1	0	22	1	0	0

Displaying 13 - 20 of 20 results

Units: Fractions of inches Grade Rule Display: Increment

Centric 8 Production (7.4) **D14882-Stretch To Fit JPN LS RIB TEE** **D14882 MC GO: FA24: SHINWON: JPN 2x2 100cttn: L/S Version of D8877: 17-BL 11.5-Chs (-1/4): 11-Sh. 2-01-24-Re-run body and approved based on FA23 BOM 702308 done by Shinwon Final** **READY-Sample 2/14/2024, 4:37 AM**

Image



Season	Fall 2024
Brand/Division	GAP - GIRLS
Collection	OUTLET GIRLS KNIT TOPS/TEES
Department	GIRLS KNIT /SWEATERS
Measurement Chart	D14882 MC GO: FA24: SHINWON: JPN 2x2 100cttn: L/S Version of D8877: 17-BL 11.5-Chs (-1/4): 11-Sh. 2-01-24-Re-run body and approved based on FA23 BOM 702308 done by Shinwon Final

Milestone	Final
Size Range	ALPHA
Selected Sizes	XS-XXL
Base Size	M
Grade Rule	Gap Girl Knit Sweater Top Alpha (Half) 2022
Size Chart Tier	KB Alpha L30
Status	Non-fit Final
Sample Request Sizes	M
Tolerance Changed	✓

Tolerance Message	
MC Comments	Ref pattern 2x2 GGK117F21-577276. Chest is 11.75-14 due to 100cttn rib
Created	2/1/2024, 7:21 PM
Created By	Svetlana Nevskaya
Modified	2/1/2024, 7:27 PM
Modified By	Svetlana Nevskaya

Centric 8 **D14882-Stretch** **D14882 MC GO: FA24: SHINWON: JPN 2x2 100cttn: L/S Version of D8877: 17-BL 11.5-** **READY-Sample 2/14/2024, 4:37 AM**
Production **To Fit JPN LS** **Chs (-1/4): 11-Sh. 2-01-24-Re-run body and approved based on FA23 BOM 702308**
(7.4) **RIB TEE** **done by Shinwon Final**

Measurement Chart

POM Name	Description	POM Variation	Tol Fraction (-)	Tol Fraction (+)	XS	S	M	L	XL	XXL
J9.9	CF Body Length from the Imaginary Line at the HPS to the Bottom Edge	(G) Top	-1/2	1/2	14	15 1/2	17	18	19	20
↳ G-17 AS 8877										
B25.13	Neck Width	(G) Seam to Seam >7"	-1/4	1/4	5 7/8	6 1/4	6 1/2	6 3/4	7	7 1/4
B26.2	Front Neck Drop	Imaginary Line to Seam	-1/4	1/4	2 3/4	3	3 1/4	3 3/8	3 1/2	3 5/8
B29.6	Back Neck Drop	Imaginary Line to Seam	-1/8	1/8	1	1 1/4	1 1/4	1 1/4	1 3/8	1 3/8
Z18.3	Trim Height	Neck at Center Back	-1/8	1/8	5/8	5/8	5/8	5/8	5/8	5/8
C1.15	Shoulder Width	(G) Front - Seam to Seam </=14"	-1/2	1/2	9 7/8	10 1/2	11	11 1/2	12	12 1/2
↳ 2X2 G XS TIGHT FIT D6984										
C3	Shoulder Slope		-1/8	1/8	1/2	5/8	5/8	5/8	3/4	3/4
C7	Shoulder Seam Forward at Neckline		-1/8	1/8	3/8	3/8	3/8	3/8	3/8	3/8
D13.3	Armhole Straight - 2 Point Measurement	(G) </=6.5"	-1/4	1/4	5 1/8	5 5/8	6 1/8	6 3/8	6 5/8	6 7/8
F7.2	High Chest at 1/2 of Armhole	(G)	-1/4	1/4	8 1/8	8 3/4	9 1/4	9 3/4	10 1/4	10 3/4
↳ 2X2 G XS TIGHT FIT D6984										
F20.2	High Back at 1/2 of Armhole	(G)	-1/4	1/4	8 3/8	9	9 1/2	10	10 1/2	11
F10.11	Chest 1" Below Armhole	(G) </=16"	-1/2	1/2	9 3/4	10 3/4	11 1/2	12 1/4	13	13 3/4
↳ 2x2 D6984										
i5.19	Bottom Opening - Relaxed	(G) </=16"	-1/2	1/2	9 3/4	10 3/4	11 1/2	12 1/4	13	13 3/4

Displaying 1 - 13 of 20 results

Units: Fractions of inches Grade Rule Display: Absolute

Centric 8 **D14882-Stretch** **D14882 MC GO: FA24: SHINWON: JPN 2x2 100cttn: L/S Version of D8877: 17-BL 11.5-** **READY-Sample 2/14/2024, 4:37 AM**
Production **To Fit JPN LS** **Chs (-1/4): 11-Sh. 2-01-24-Re-run body and approved based on FA23 BOM 702308**
(7.4) **RIB TEE** **done by Shinwon Final**

Measurement Chart

POM Name	Description	POM Variation	Tol Fraction (-)	Tol Fraction (+)	XS	S	M	L	XL	XXL
T10.2	Hem Height	Bottom	-1/8	1/8	5/8	5/8	5/8	5/8	5/8	5/8
E1.0	Sleeve Length from Center Back		-1/2	1/2	21	23 1/2	26	27 1/4	28 1/2	29 3/4
E7	Sleeve Cap Height		-1/8	1/8	3 7/8	4 1/4	4 5/8	4 3/4	4 7/8	5
↳ PATTERN REFERENCE ONLY G										
E9.2	Bicep 1" below Armhole	<6	-1/4	1/4	3 1/2	3 7/8	4 1/4	4 1/2	4 3/4	5
E13.3	Sleeve Opening Relaxed	Long	-1/4	1/4	2 3/4	2 3/4	3	3 1/4	3 1/4	3 1/2
T10.7	Hem Height	(G) Sleeve <1"	-1/8	1/8	5/8	5/8	5/8	5/8	5/8	5/8
B34	Minimum Neck Stretch		-0.0	1/8	21	22	22	23	23	23

Displaying 14 - 20 of 20 results

Units: Fractions of inches Grade Rule Display: Absolute