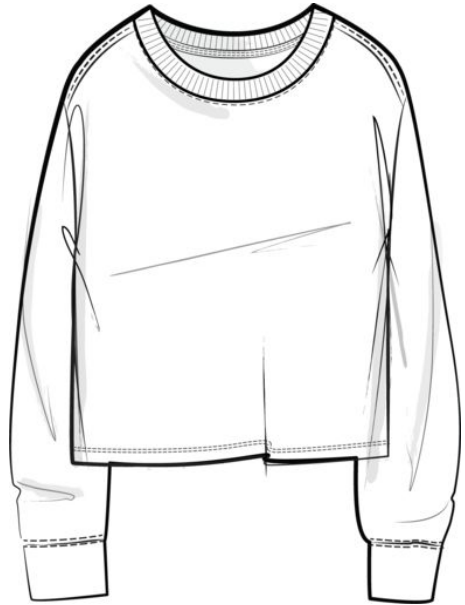


Image



Tech Pack	D15489 Oversized LS ELV GR 000749989 Adopted
Season	Fall 2024
Brand/Division	GAP - GIRLS
Department	GIRLS KNIT /SWEATERS
Collection	OUTLET GIRLS KNIT TOPS/TEES



Design BOM	LOGO Oversized LS ELV GR 000749989 523471,486532
BOM Number	000749989
Category	KNITS
Sub-Category	KNIT TOPS
Legacy Style Numbers	486532, 523471
Status	Adopted

Flow	August
Vendor	SHINWON CORPORATION
Created	3/4/2024, 2:09 AM
Modified	3/4/2024, 2:09 AM

Disclaimer Text

This Gap Inc. style must be produced and tested in compliance with all Product Safety Standards and Procedures as outlined in the Product Safety & Regulations Manual (Apparel & Apparel Accessories), PSR Protocols, SOPs, and current Technical Bulletins. This information can be found on the Gap Source Library on The Thread (Category Standards & Testing). Each vendor is responsible for ensuring that all products made for Gap Inc. are in compliance with all applicable laws, rules, guidelines, and regulations.

Components

Component	Type	Status	Created	Modified	BOMColorMatrix				
					Image	CC Name	CC Status	BOM CC Number	Final Sustainable Product Claims
LOGO Oversized LS ELV GR 000749989 523471, 486532	Design BOM	Adopted	3/4/2024, 2:09 AM	3/4/2024, 2:09 AM		DISTRICT GREEN 379	Adopted	000002932438	
						TAPESTRY NAVY	Adopted	000002932444	

Displaying 1 result

Documents

Document	File	Created	Modified	Delete Document	Owner	Owner Type
25648 CC#2(TRUE BLACK).jpg	25648 CC#2(TRUE BLACK).jpg	11/17/2022, 6:55 AM	5/23/2023, 6:24 AM	✓	GRAPHIC	Material
25648 CC#3(15-1114 tcx).jpg	25648 CC#3(15-1114 tcx).jpg	11/17/2022, 6:55 AM	5/23/2023, 6:25 AM	✓	GRAPHIC	Material
25648 CC#4(19-3815 tcx).jpg	25648 CC#4(19-3815 tcx).jpg	11/17/2022, 6:58 AM	5/23/2023, 6:25 AM	✓	GRAPHIC	Material
25648 CC#5(19-0413 tcx).jpg	25648 CC#5(19-0413 tcx).jpg	11/17/2022, 7:00 AM	5/23/2023, 6:25 AM	✓	GRAPHIC	Material
25648 CC#1 (19-1528 tcx).jpg	25648 CC#1 (19-1528 tcx).jpg	11/17/2022, 7:00 AM	5/23/2023, 6:25 AM	✓	GRAPHIC	Material
602209.ai	602209.ai	9/6/2022, 3:48 AM	9/6/2022, 3:55 AM	✓	GRAPHIC	Material
762386 & 762393 updated color combo.pdf	762386 & 762393 updated color combo.pdf	4/13/2023, 8:51 AM	5/23/2023, 6:22 AM	✓	GRAPHIC	Material
785333 785461.png	785333 785461.png	4/4/2023, 8:41 AM	5/23/2023, 6:23 AM	✓	GRAPHIC	Material
785333 785461.png	785333 785461.png	4/4/2023, 9:01 AM	5/23/2023, 6:20 AM	✓	GRAPHIC	Material
785638 785619.jpg	785638 785619.jpg	4/19/2023, 7:54 AM	5/23/2023, 6:23 AM	✓	GRAPHIC	Material
785638 785619.png	785638 785619.png	4/19/2023, 8:00 AM	5/23/2023, 6:23 AM	✓	GRAPHIC	Material
794439 b10.png	794439 b10.png	4/26/2023, 3:49 AM	5/23/2023, 6:24 AM	✓	GRAPHIC	Material
804715 & 804520 NEW ADD ARCH LOGO HD & JOGGER.ai	804715 & 804520 NEW ADD ARCH LOGO HD & JOGGER.ai	4/13/2023, 6:38 AM	5/23/2023, 6:24 AM	✓	GRAPHIC	Material

Displaying 1 - 13 of 18 results

Documents

Document	File	Created	Modified	Delete Document	Owner	Owner Type
OF24G041-GO-ARCH-SEQUIN.ai	OF24G041-GO-ARCH-SEQUIN.ai	11/2/2023, 4:04 PM	1/26/2024, 12:10 AM	✓	OF24G041-GO-ARCH-SEQUIN	Color/Print/Graphic
OF24G041-GO-ARCH-SEQUIN.ai	OF24G041-GO-ARCH-SEQUIN.ai	1/26/2024, 12:09 AM	1/26/2024, 12:09 AM		OF24G041-GO-ARCH-SEQUIN	Color/Print/Graphic
RD155892 - 30'S COTTON Jersey Piece Dye.zfab	RD155892 - 30'S COTTON Jersey Piece Dye.zfab	11/17/2022, 8:26 AM	11/17/2022, 8:26 AM		155892	Material
Screenshot 2023-04-19 153638.jpg	Screenshot 2023-04-19 153638.jpg	4/19/2023, 7:37 AM	5/23/2023, 6:23 AM	✓	GRAPHIC	Material
Screenshot 2023-04-19 153728.jpg	Screenshot 2023-04-19 153728.jpg	4/19/2023, 7:38 AM	5/23/2023, 6:23 AM	✓	GRAPHIC	Material

Displaying 14 - 18 of 18 results

Centric 8 Production (7.4) D15489-Oversized LS ELV GR LOGO Oversized LS ELV GR 000749989 523471, 486532 IN WORK-Sample 3/4/2024, 2:10 AM



Design Number	D15489	Flow	August
Description	LS ELV GR	Category	KNITS
BOM Number	000749989	Sub-Category	KNIT TOPS
Design BOM	LOGO Oversized LS ELV GR 000749989 523471,486532	Item Type	GRAPHICS
Status	Adopted	Design Type	Top
BOM Version	LOGO	Design Sub-Type	Tee
BOM Primary RD Number	155892	Fit Camp	Oversized
Supplier [Allocate]		Element	
Material Supplier Status		Vendor	SHINWON CORPORATION
Primary RD Comment		GIS Office	Vietnam
Carryover		Legacy Style Numbers	486532, 523471
Season	Fall 2024	Booking Track	
Brand/Division	GAP - GIRLS	Good/Better/Best	
Department	GIRLS KNIT /SWEATERS	Priority	
Collection	OUTLET GIRLS KNIT TOPS/TEES	Hard Tag Indicator	
Design Concept		Hang/Fold Instructions	
		BOM Comments New	
		Revision Modified	3/4/2024, 2:10 AM

Costing Information

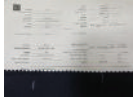









Last Send to Costing Date	2/26/2024, 11:47 PM	Send to Costing Status	pass
Last Send to Costing Status	Quote HQ1633073,HQ1648554 is successfully posted to TradeStone.	Send to Costing Validation	
		Send to Costing	

BOM Details






Product	Material Name	Supplier Article Number	Gauge/Ends	Stitch	Common Size	Common Qty	Usage	Image	Primary RD	Quality Details	Supplier [Allocate]	UOM	Only for Product Colors	DISTRICT GREEN 379 - 000002932438	TAPESTRY NAVY - 000002932444	Comment
---------	---------------	-------------------------	------------	--------	-------------	------------	-------	-------	------------	-----------------	---------------------	-----	-------------------------	-----------------------------------	------------------------------	---------

Fabric (2)
 Displaying 5 groups and 10 results

BOM Details

Product	Material Name	Supplier Article Number	Gauge/Ends	Stitch	Common Size	Common Qty	Usage	Image	Primary RD	Quality Details	Supplier [Allocate]	UOM	Only for Product Colors	DISTRICT GREEN 379 - 000002932438	TAPESTRY NAVY - 000002932444	Comment
155892	30'S COTTON Jersey Piece Dye	CT-J0128				0	BODY		✓	100% Cotton Better Cotton (BCI) / 23 / 30s Spun / 70.0 in / 135.0 g/m2 BW / 150.0 g/m2 AW / Piece Dye	155892:COLOR & TOUCH CO LTD			District Green 379 	TAPESTRY NAVY 105 	
260914	1X1 Piece Dye	CT-R0471				0	NECK			100% Cotton Conventional / 18 / 30/1 Spun / 70.0 in / 175.0 g/m2 BW / 190.0 g/m2 AW / Piece Dye	260914:COLOR & TOUCH CO LTD			District Green 379 	TAPESTRY NAVY 105 	
Trim (1)																
183757	Spun Polyester_Gap	Preferred - A&E or Coats; Tier 2 - Youm Kwang (Shell RD: 183427)			27	0					183757:Platform			District Green 379 	TAPESTRY NAVY 105 	
Wash (1)																
1008637	FABRIC WASH					0										
Graphic (1)																
GRAPHIC	GRAPHIC					0								OF24G041-GO-ARCH-SEQUIN 	OF24G050-GO-ARCH-Rainbow 	*Navy Uniform CC will match rainbow logo
Packaging and Labels (5)																
Displaying 1 - 5 of 10 results																

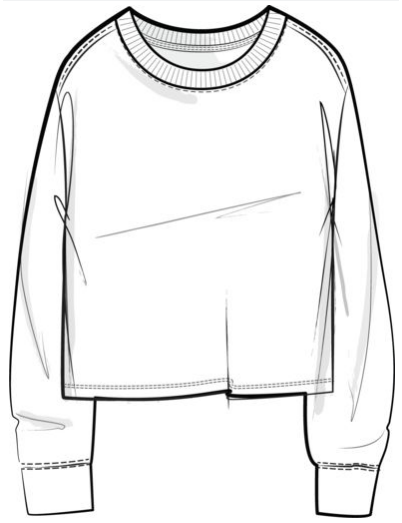
BOM Details

Product	Material Name	Supplier Article Number	Gauge/Ends	Stitch	Common Size	Common Qty	Usage	Image	Primary RD	Quality Details	Supplier [Allocate]	UOM	Only for Product Colors	DISTRICT GREEN 379 - 000002932438	TAPESTRY NAVY - 000002932444	Comment
228762	GAPKIDS HEAT TRANSFER LABELS - VERTICAL HTL - GKLBL-228762-G(GLOBAL) GKLBL-228762-C(CANADA) GKLBL-228762-E(EUROPE) Other Label	APPROVED SUPPLIERS: AVERY DENNISON, RPAC, SML, SAMWON				0				Other Label / /	228762:Nominated			GAP BLUE	WHITE	
188658	Gap_Universal_Normal Wash_C&C Label (Global) - 30mm Slit edge single face satin tape Care/Content Label	AVERY DENNISON, SML, RPAC				0				Care/Content Label / /	188658:Nominated					
146541	Printed GGO Global Traceability Label Traceability Label/Joker Tag	VENDOR SOURCED				0				Traceability Label/Joker Tag / Polyester / Straight Cut & Fused	146541:Nominated					
265741	GAP KIDS AND ADULT DIME SIZE STICKERS - GKSTK-265741-G(GLOBAL) GKSTK-265741-C(CANADA)GKSTK-265741-E(EUROPE) Sticker	AVERY DENNISON, RPAC, SML, SAMWON				0				Sticker / /	265741:Nominated					
239570	GAPKIDS GIRL TEE STICKER - FLIP THESE SEQUINS - GKSTK-239570-G(GLOBAL) GKSTK-239570-C(CANADA)GKSTK-239570-CHAR(CH/HK/TW) Sticker	AVERY DENNISON, RPAC, SML, SAMWON				0				Sticker / /	239570:Nominated					USE FOR COSMIC SKY PURPLE & DISTRICT GREEN CC'S ONLY

Displaying 6 - 10 of 10 results

Centric 8 Production (7.4)	D15489- Oversized LS ELV GR	D15489 MC GO: FA24: SHINWON: 18-BL 17.5-Chs 18-Shl: GO GGK106F22 - 595392-Shinwon: 2-15-24-Submit M. 2-19-24-Approved Final	READY-Sample 3/4/2024, 2:10 AM
---	--	--	---------------------------------------

Image



Season	Fall 2024
Brand/Division	GAP - GIRLS
Department	GIRLS KNIT /SWEATERS
Collection	OUTLET GIRLS KNIT TOPS/TEES
Measurement Chart	D15489 MC GO: FA24: SHINWON: 18-BL 17.5-Chs 18- Shl: GO GGK106F22 -595392- Shinwon: 2-15-24-Submit M. 2- 19-24-Approved Final
Milestone	Final

Size Range	ALPHA
Selected Sizes	XS-XXL
Base Size	M
Grade Rule	Gap Girl Knit Sweater Top Alpha (Half) 2022
Size Chart Tier	KB Alpha L30
Status	Final
Sample Request Sizes	M
Tolerance Changed	✓
Tolerance Message	

MC Comments	Repeat order GO-GGK106F22- MS#595392. Exact same as FA23 BOM 703513 done by Shinwon and BOM 703519 done by Hansae
Created	2/6/2024, 4:45 PM
Created By	Svetlana Nevskaya
Modified	2/29/2024, 5:19 PM
Modified By	Svetlana Nevskaya

Centric 8 D15489- D15489 MC GO: FA24: SHINWON: 18-BL 17.5-Chs 18-Shl: GO GGK106F22 - READY-Sample 3/4/2024, 2:10 AM
 Production Oversized LS 595392-Shinwon: 2-15-24-Submit M. 2-19-24-Approved Final
 (7.4) ELV GR

Measurement Chart

POM Name	Description	POM Variation	QC	Tol Fraction (-)	Tol Fraction (+)	Tolerance Message	Grading Override Message	XS	S	M	L	XL	XXL
J9.9	CF Body Length from the Imaginary Line at the HPS to the Bottom Edge	(G) Top	✓	-1/2	1/2			-1 1/2	-1 1/2	18	1	1	1
↳ G-18 106F22-GO													
B25.13	Neck Width	(G) Seam to Seam >7"	✓	-1/4	1/4			-3/8	-1/4	7 1/2	1/4	1/4	1/4
B26.2	Front Neck Drop	Imaginary Line to Seam		-1/4	1/4			-1/4	-1/4	3 1/2	1/8	1/8	1/8
B29.6	Back Neck Drop	Imaginary Line to Seam		-1/8	1/8			-1/4	0	1 3/8	0	1/8	0
Z18.3	Trim Height	Neck at Center Back		-1/8	1/8			0	0	1	0	0	0
↳ RIB													
C1.17	Shoulder Width	(G) Front - Seam to Seam >15"	✓	-1/2	1/2			-1 1/8	-7/8	18	7/8	7/8	7/8
↳ G 106F22-GO													
C3	Shoulder Slope			-1/8	1/8			-1/8	-1/8	1 3/4	1/8	1/8	1/8
↳ 106F22-GO													
C7	Shoulder Seam Forward at Neckline			-1/8	1/8			0	0	5/8	0	0	0
↳ 106F22-GO													
D13.3	Armhole Straight - 2 Point Measurement	(G) </=6.5"	✓	-1/4	1/4			-1/2	-1/2	6 1/4	1/4	1/4	1/4
F7.1	High Chest at 1/2 of Armhole	(G) Dropped		-1/4	1/4			-1	-3/4	17	3/4	3/4	3/4
↳ G 106F22-GO													

Displaying 1 - 10 of 21 results

Units: Fractions of inches Grade Rule Display: Increment

Centric 8	D15489-	D15489 MC GO: FA24: SHINWON: 18-BL 17.5-Chs 18-Shl: GO GGK106F22 -	READY-Sample 3/4/2024, 2:10 AM
Production	Oversized LS	595392-Shinwon: 2-15-24-Submit M. 2-19-24-Approved Final	
(7.4)	ELV GR		

Measurement Chart

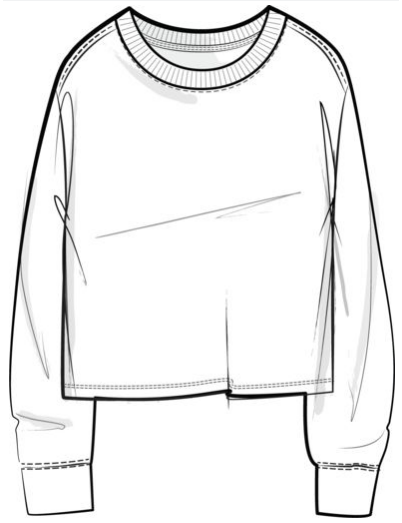
POM Name	Description	POM Variation	QC	Tol Fraction (-)	Tol Fraction (+)	Tolerance Message	Grading Override Message	XS	S	M	L	XL	XXL
F20	High Back at 1/2 of Armhole	(G) Dropped		-1/4	1/4			-1	-3/4	17 1/4	3/4	3/4	3/4
F10.11	Chest 1" Below Armhole	(G) </=16"	✓	-1/2	1/2			-1	-3/4	17 1/2	3/4	3/4	3/4
↳ 106F22-GO													
i5.19	Bottom Opening - Relaxed	(G) </=16"	✓	-1/2	1/2			-1	-3/4	17 1/2	3/4	3/4	3/4
T10.2	Hem Height	Bottom		-1/8	1/8			0	0	1/2	0	0	0
E1.0	Sleeve Length from Center Back		✓	-1/2	1/2			-2 1/2	-2 1/2	26	1 1/4	1 1/4	1 1/4
E9.2	Bicep 1" below Armhole	<6		-1/4	1/4			-1/2	-1/2	6 1/8	1/4	1/4	1/4
E7	Sleeve Cap Height			-1/8	1/8			-1/4	-1/4	2 1/8	1/8	1/8	1/8
↳ PATTERN REFERENCE ONLY													
i12.1	Width ___ above Rib/Cuff Seam	2" - Sleeve		-1/4	1/4			-1/8	-1/8	4	1/8	1/8	1/8
E13.3	Sleeve Opening Relaxed	Long	✓	-1/4	1/4			-1/8	-1/8	3 1/4	1/8	1/8	1/8
↳ SELF													
N16.4	Rib/Cuff/Welt Height	Sleeve		-1/8	1/8			-1/4	0	2 1/4	0	0	0
↳ G 106F22-GO													
B34.1	PSR Minimum Neck Stretch	(G)	✓	-0.0	1/8			-1	0	22	1	0	0

Displaying 11 - 21 of 21 results

Units: Fractions of inches Grade Rule Display: Increment

Centric 8 **D15489-** **D15489 MC GO: FA24: SHINWON: 18-BL 17.5-Chs 18-Shl: GO GGK106F22 -** **READY-Sample 3/4/2024, 2:10 AM**
Production **Oversized LS** **595392-Shinwon: 2-15-24-Submit M. 2-19-24-Approved Final**

Image



Season	Fall 2024
Brand/Division	GAP - GIRLS
Department	GIRLS KNIT /SWEATERS
Collection	OUTLET GIRLS KNIT TOPS/TEES
Measurement Chart	D15489 MC GO: FA24: SHINWON: 18-BL 17.5-Chs 18-Shl: GO GGK106F22 -595392-Shinwon: 2-15-24-Submit M. 2-19-24-Approved Final
Milestone	Final

Size Range	ALPHA
Selected Sizes	XS-XXL
Base Size	M
Grade Rule	Gap Girl Knit Sweater Top Alpha (Half) 2022
Size Chart Tier	KB Alpha L30
Status	Final
Sample Request Sizes	M
Tolerance Changed	✓
Tolerance Message	

MC Comments	Repeat order GO-GGK106F22-MS#595392. Exact same as FA23 BOM 703513 done by Shinwon and BOM 703519 done by Hansae
Created	2/6/2024, 4:45 PM
Created By	Svetlana Nevskaya
Modified	2/29/2024, 5:19 PM
Modified By	Svetlana Nevskaya

Measurement Chart

POM Name	Description	POM Variation	Tol Fraction (-)	Tol Fraction (+)	XS	S	M	L	XL	XXL
J9.9	CF Body Length from the Imaginary Line at the HPS to the Bottom Edge	(G) Top	-1/2	1/2	15	16 1/2	18	19	20	21

Displaying 1 - 1 of 21 results

Units: Fractions of inches Grade Rule Display: Absolute

Centric 8 D15489- D15489 MC GO: FA24: SHINWON: 18-BL 17.5-Chs 18-Shl: GO GGK106F22 - READY-Sample 3/4/2024, 2:10 AM
 Production Oversized LS 595392-Shinwon: 2-15-24-Submit M. 2-19-24-Approved Final
 (7.4) ELV GR

Measurement Chart

POM Name	Description	POM Variation	Tol Fraction (-)	Tol Fraction (+)	XS	S	M	L	XL	XXL
↳ G-18 106F22-GO										
B25.13	Neck Width	(G) Seam to Seam >7"	-1/4	1/4	6 7/8	7 1/4	7 1/2	7 3/4	8	8 1/4
B26.2	Front Neck Drop	Imaginary Line to Seam	-1/4	1/4	3	3 1/4	3 1/2	3 5/8	3 3/4	3 7/8
B29.6	Back Neck Drop	Imaginary Line to Seam	-1/8	1/8	1 1/8	1 3/8	1 3/8	1 3/8	1 1/2	1 1/2
Z18.3	Trim Height	Neck at Center Back	-1/8	1/8	1	1	1	1	1	1
↳ RIB										
C1.17	Shoulder Width	(G) Front - Seam to Seam >15"	-1/2	1/2	16	17 1/8	18	18 7/8	19 3/4	20 5/8
↳ G 106F22-GO										
C3	Shoulder Slope		-1/8	1/8	1 1/2	1 5/8	1 3/4	1 7/8	2	2 1/8
↳ 106F22-GO										
C7	Shoulder Seam Forward at Neckline		-1/8	1/8	5/8	5/8	5/8	5/8	5/8	5/8
↳ 106F22-GO										
D13.3	Armhole Straight - 2 Point Measurement	(G) </=6.5"	-1/4	1/4	5 1/4	5 3/4	6 1/4	6 1/2	6 3/4	7
F7.1	High Chest at 1/2 of Armhole	(G) Dropped	-1/4	1/4	15 1/4	16 1/4	17	17 3/4	18 1/2	19 1/4
↳ G 106F22-GO										
F20	High Back at 1/2 of Armhole	(G) Dropped	-1/4	1/4	15 1/2	16 1/2	17 1/4	18	18 3/4	19 1/2
F10.11	Chest 1" Below Armhole	(G) </=16"	-1/2	1/2	15 3/4	16 3/4	17 1/2	18 1/4	19	19 3/4

Displaying 2 - 12 of 21 results

Units: Fractions of inches Grade Rule Display: Absolute

Centric 8 D15489- D15489 MC GO: FA24: SHINWON: 18-BL 17.5-Chs 18-Shl: GO GGK106F22 - READY-Sample 3/4/2024, 2:10 AM
 Production Oversized LS 595392-Shinwon: 2-15-24-Submit M. 2-19-24-Approved Final
 (7.4) ELV GR

Measurement Chart

POM Name	Description	POM Variation	Tol Fraction (-)	Tol Fraction (+)	XS	S	M	L	XL	XXL
i5.19	Bottom Opening - Relaxed	(G) $\leq 16''$	-1/2	1/2	15 3/4	16 3/4	17 1/2	18 1/4	19	19 3/4
T10.2	Hem Height	Bottom	-1/8	1/8	1/2	1/2	1/2	1/2	1/2	1/2
E1.0	Sleeve Length from Center Back		-1/2	1/2	21	23 1/2	26	27 1/4	28 1/2	29 3/4
E9.2	Bicep 1" below Armhole	<math>< 6</math>	-1/4	1/4	5 1/8	5 5/8	6 1/8	6 3/8	6 5/8	6 7/8
E7	Sleeve Cap Height		-1/8	1/8	1 5/8	1 7/8	2 1/8	2 1/4	2 3/8	2 1/2
↳ PATTERN REFERENCE ONLY										
i12.1	Width __ above Rib/Cuff Seam	2" - Sleeve	-1/4	1/4	3 3/4	3 7/8	4	4 1/8	4 1/4	4 3/8
E13.3	Sleeve Opening Relaxed	Long	-1/4	1/4	3	3 1/8	3 1/4	3 3/8	3 1/2	3 5/8
↳ SELF										
N16.4	Rib/Cuff/Welt Height	Sleeve	-1/8	1/8	2	2 1/4	2 1/4	2 1/4	2 1/4	2 1/4
↳ G 106F22-GO										
B34.1	PSR Minimum Neck Stretch	(G)	-0.0	1/8	21	22	22	23	23	23

Displaying 13 - 21 of 21 results

Units: Fractions of inches Grade Rule Display: Absolute

Centric 8 Production (7.4)		D15489-Oversized LS ELV GR		2-19-24-1ST SHIWNON		APPROVED 2/19/2024, 7:08 PM	
Season	Fall 2024	Measurement Chart	2-19-24-1ST SHIWNON	Evaluation State	Pass		
Brand/Division	GAP - GIRLS	Review		Fit Round	1		
Department	GIRLS KNIT /SWEATERS	Size Range	ALPHA	Round Result			
Collection	OUTLET GIRLS KNIT TOPS/TEES	Selected Sizes	XS-XXL	Revision Description	1ST		
Measurement Chart	D15489 MC GO: FA24: SHINWON: 18-BL 17.5-Chs 18- Shl: GO G GK106F22 -595392- Shinwon: 2-15-24-Submit M. 2- 19-24-Approved Final	Base Size	M				
		Grade Rule	Gap Girl Knit Sweater Top Alpha (Half) 2022				
		Supplier	SHINWON CORPORATION				
		Status	Final				

Evaluation

POM Name	Description	POM Variation	Tol Fraction (-)	Tol Fraction (+)	QC	M 2-19-24-1ST SHIWNON						
						Target	Sample	Vendor Actual	Sample HQ Actual Delta	HQ Actual	HQ Actual Delta	Revised
J9.9	CF Body Length from the Imaginary Line at the HPS to the Bottom Edge	(G) Top	-1/2	1/2	✓	18	000352451 Fit M LS ELV GR 000749987 486506, 523455 000749987	18	0	18	0	18
↳ G-18 106F22-GO												
B25.13	Neck Width	(G) Seam to Seam >7"	-1/4	1/4	✓	7 1/2	000352451 Fit M LS ELV GR 000749987 486506, 523455 000749987	7 1/2	0	7 1/2	0	7 1/2
B26.2	Front Neck Drop	Imaginary Line to Seam	-1/4	1/4		3 1/2	000352451 Fit M LS ELV GR 000749987 486506, 523455 000749987	3 5/8	1/8	3 1/2	0	3 1/2
B29.6	Back Neck Drop	Imaginary Line to Seam	-1/8	1/8		1 3/8	000352451 Fit M LS ELV GR 000749987 486506, 523455 000749987	1 1/2	1/8	1 3/8	0	1 3/8
Z18.3	Trim Height	Neck at Center Back	-1/8	1/8		1	000352451 Fit M LS ELV GR 000749987 486506, 523455 000749987	1	0	1	0	1

Displaying 1 - 5 of 21 results

Units: Fractions of inches

Evaluation

POM Name	Description	POM Variation	Tol Fraction (-)	Tol Fraction (+)	QC	M 2-19-24-1ST SHIWNON						
						Target	Sample	Vendor Actual	Sample HQ Actual Delta	HQ Actual	HQ Actual Delta	Revised
↳ RIB												
C1.17	Shoulder Width	(G) Front - Seam to Seam >15"	-1/2	1/2	✓	18	000352451 Fit M LS ELV GR 000749987 486506, 523455 000749987	18	0	18	0	18
↳ G 106F22-GO												
C3	Shoulder Slope		-1/8	1/8		1 3/4	000352451 Fit M LS ELV GR 000749987 486506, 523455 000749987	1 5/8	-1/8	1 1/2	-1/4	1 3/4
↳ 106F22-GO												
C7	Shoulder Seam Forward at Neckline		-1/8	1/8		5/8	000352451 Fit M LS ELV GR 000749987 486506, 523455 000749987	5/8	0	5/8	0	5/8
↳ 106F22-GO												
D13.3	Armhole Straight - 2 Point Measurement	(G) </=6.5"	-1/4	1/4	✓	6 1/4	000352451 Fit M LS ELV GR 000749987 486506, 523455 000749987	6 3/8	1/8	6 3/8	1/8	6 1/4
F7.1	High Chest at 1/2 of Armhole	(G) Dropped	-1/4	1/4		17	000352451 Fit M LS ELV GR 000749987 486506, 523455 000749987	17	0	17	0	17
↳ G 106F22-GO												
F20	High Back at 1/2 of Armhole	(G) Dropped	-1/4	1/4		17 1/4	000352451 Fit M LS ELV GR 000749987 486506, 523455 000749987	17 1/4	0	17 1/4	0	17 1/4

Displaying 6 - 11 of 21 results

Units: Fractions of inches

Evaluation

POM Name	Description	POM Variation	Tol Fraction (-)	Tol Fraction (+)	QC	M 2-19-24-1ST SHIWNON						
						Target	Sample	Vendor Actual	Sample HQ Actual Delta	HQ Actual	HQ Actual Delta	Revised
F10.11	Chest 1" Below Armhole	(G) <=16"	-1/2	1/2	✓	17 1/2	000352451 Fit M LS ELV GR 000749987 486506, 523455 000749987	17 1/2	0	17 3/8	-1/8	17 1/2
↳ 106F22-GO												
i5.19	Bottom Opening - Relaxed	(G) <=16"	-1/2	1/2	✓	17 1/2	000352451 Fit M LS ELV GR 000749987 486506, 523455 000749987	17 1/2	0	17 1/2	0	17 1/2
T10.2	Hem Height	Bottom	-1/8	1/8		1/2	000352451 Fit M LS ELV GR 000749987 486506, 523455 000749987	1/2	0	1/2	0	1/2
E1.0	Sleeve Length from Center Back		-1/2	1/2	✓	26	000352451 Fit M LS ELV GR 000749987 486506, 523455 000749987	26	0	25 7/8	-1/8	26
E9.2	Bicep 1" below Armhole	<6	-1/4	1/4		6 1/8	000352451 Fit M LS ELV GR 000749987 486506, 523455 000749987	6 1/8	0	6 1/8	0	6 1/8
E7	Sleeve Cap Height		-1/8	1/8		2 1/8	000352451 Fit M LS ELV GR 000749987 486506, 523455 000749987	2 1/8	0	2	-1/8	2 1/8
↳ PATTERN REFERENCE ONLY												
i12.1	Width ___ above Rib/Cuff Seam	2" - Sleeve	-1/4	1/4		4	000352451 Fit M LS ELV GR 000749987 486506, 523455 000749987	4	0	4	0	4
E13.3	Sleeve Opening Relaxed	Long	-1/4	1/4	✓	3 1/4	000352451 Fit M LS ELV GR 000749987 486506, 523455 000749987	3 1/4	0	3 3/8	1/8	3 1/4

Displaying 12 - 19 of 21 results

Units: Fractions of inches

Evaluation

POM Name	Description	POM Variation	Tol Fraction (-)	Tol Fraction (+)	QC	M 2-19-24-1ST SHIWNON						
						Target	Sample	Vendor Actual	Sample HQ Actual Delta	HQ Actual	HQ Actual Delta	Revised
↳ SELF												
N16.4	Rib/Cuff/Welt Height	Sleeve	-1/8	1/8		2 1/4	000352451 Fit M LS ELV GR 000749987 486506, 523455 000749987	2 1/4	0	2 1/4	0	2 1/4
↳ G 106F22-GO												
B34.1	PSR Minimum Neck Stretch	(G)	-0.0	1/8	✓	22	000352451 Fit M LS ELV GR 000749987 486506, 523455 000749987	22	0	22	0	22

Displaying 20 - 21 of 21 results

Units: Fractions of inches

Centric 8 Production (7.4)		D15489-Oversized LS ELV GR		D15489	IN WORK 3/4/2024, 2:10 AM
Carry Over	✓	Collection	OUTLET GIRLS KNIT TOPS/TEES	Type	Safety Callouts
Brand/Division	GAP - GIRLS	Number of CCs	32	Spec Component	D15489
Department	GIRLS KNIT /SWEATERS				

Items

Spec Item	Safety Callouts	PSR Age Group	PSR Product Group	PSR Market	Comment	PSR Line Review Date	BOM CC Exception	BOM CC Exception Comment
All Safety Callouts: Global Kids APPAREL - Fragile Trims: Laceration Hazard (203) (1) ↗								
Global Kids APPAREL - Fragile Trims: Laceration Hazard (203)	Fragile trims such as sequins, beads, rhinestones, crystals and/or studs must not create sharp points or edges.	Kids	APPAREL	Global				
All Safety Callouts: No safety callout (0) ↗								
All Safety Callouts: Global ALL ALL - No Callout (514) (1) ↗								
Global ALL ALL - No Callout (514)	No Styling Callout.	ALL	ALL	Global				
Displaying 3 groups and 2 results								